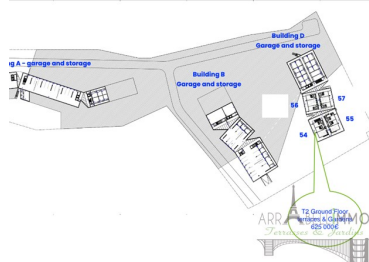





## Lagoa e Carvoeiro - Apartment




 **2** Bedrooms  
 **2** Bathrooms  
 **157,5** Area (m<sup>2</sup>)  
 **76,45** Land Area (m<sup>2</sup>)  
 **Swimming Pool**


**625 000 €**  
(EUR €)

### 158 m<sup>2</sup> 2-Bedroom with Private Garden & Terrace – Final Units at Nomad Bay Carvoeiro

 2-Bedroom Apartment with Private Garden & Terrace – 158 m<sup>2</sup> | Nomad Bay Carvoeiro  
 Final Opportunities – Delivery Summer 2025

 Construction photos from May 2024 – Estimated delivery: Summer 2025.

The Nomad Bay resort is nearing completion. This exceptionally spacious 2-bedroom apartment (158 m<sup>2</sup>) with a private landscaped garden and terrace offers a rare opportunity to live or invest in one of the Algarve's most desirable and tranquil settings.

 Bright, spacious, and elegantly designed  
 158 m<sup>2</sup> total area, including large private terrace and garden



**Arrabelle Chevallier-Sollier**

French and English

+ 351 962 720 585 <sup>2</sup> · +33 6 86 28 24 16

arrabelle@arrabellimmo.com

**T +351 215 876 793 <sup>1</sup> · T +351 962 720 585 <sup>2</sup> · E contact@arrabellimmo.com**

**Rua do Sol a Santa Catarina, N°6 1200-455 Lisboa  
AMI 15355**

<sup>1</sup> (Call to national fixed network) | <sup>2</sup> (Call to national mobile network)



Delivered fully furnished and equipped: appliances, furniture, and décor included

Floor-to-ceiling windows in living room, kitchen, and bedrooms with direct garden access

Contemporary architecture, premium materials, low-carbon, eco-conscious design

▮ Rental Pool – Smart Investment

Take advantage of a professionally managed rental program, ensuring attractive rental income and flexible owner usage.

Participation in the rental pool is mandatory for all Nomad Bay residents.

▮ Resort amenities

Large swimming pools, landscaped gardens, gym, restaurants, reception

High-speed Wi-Fi

Seasonal shuttle to the beach

▮ Prime location – Carvoeiro, Algarve

Located on a hillside with open ocean views, just minutes from Carvalho and Vale de Centeanes beaches, golf courses, Albufeira and Vilamoura.

▮ Easy access

40 minutes from Faro International Airport (A22)

15 minutes from Portimão Airport (Lisbon flights)

10 minutes from Estombar-Lagoa train station (direct Lisbon line)

▮ Key details

Estimated delivery: Summer 2025

1 private parking space + 1 storage unit included

Full assistance with mortgage financing available



**Arrabelle Chevallier-Sollier**

French and English

+ 351 962 720 585 <sup>2</sup> · +33 6 86 28 24 16

[arrabelle@arrabellimmo.com](mailto:arrabelle@arrabellimmo.com)

**T +351 215 876 793 <sup>1</sup> · T +351 962 720 585 <sup>2</sup> · E [contact@arrabellimmo.com](mailto:contact@arrabellimmo.com)**

**Rua do Sol a Santa Catarina, N°6 1200-455 Lisboa  
AMI 15355**

<sup>1</sup> (Call to national fixed network) | <sup>2</sup> (Call to national mobile network)



## Property Features

- Heating
- Dishwashing machine
- Fitted wardrobes
- Pool
- Garden
- Furnished
- Floors: 3
- Drive way
- Views: Sea views, Countryside views, Golf views, City view, Pool view, Urbanization view, Garden view
- Security alarm
- Double glazing
- Automatic irrigation
- Walking distance to beach
- Gym
- Security door
- Energetic certification: B
- Mains water
- Washing machine
- Air conditioning
- Equipped kitchen
- Proximity: Airport, Beach, Golf course, Shopping, Restaurants, Hospital, Pharmacy, Public Transport, Schools
- Terrace
- Built year: 2024
- Private condominium
- Storage / utility room
- Video entry system
- Lift
- Electric garage gate
- Main drainage
- Quiet Location
- Solar heating
- Uninterrupted views
- Solar orientation: North, South, East, West
- Balcony



**Arrabelle Chevallier-Sollier**

French and English

+ 351 962 720 585 <sup>2</sup> · +33 6 86 28 24 16

arrabelle@arrabellimmo.com

**T +351 215 876 793 <sup>1</sup> · T +351 962 720 585 <sup>2</sup> · E [contact@arrabellimmo.com](mailto:contact@arrabellimmo.com)**

**Rua do Sol a Santa Catarina, N°6 1200-455 Lisboa  
AMI 15355**

<sup>1</sup> (Call to national fixed network) | <sup>2</sup> (Call to national mobile network)